

DHGF-10



Function

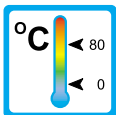
The flowmeters type DHGF-10 are impeller flowmeters.



Application

The impeller flowmeters type DHGF-10 are employed to measure volume flow of liquids. Areas of application:

- Mechanical Engineering
- Pharmaceutical Industry
- Chemical Industry
- Research and Development



Features

The series proves itself through reliable function and easy handling. Further characteristics of this model are:

- Universal mounting
- High accuracy
- High chemical resistance (ECTFE-Version)
- Threaded connection

Installation hints

The installation of the flowmeter can be done in any way in the system. The optimum deaeration will be achieved with horizontal mounting. The flow direction must be observed.

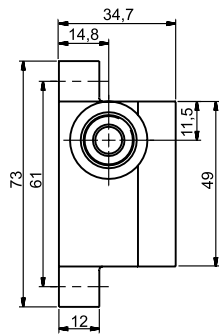
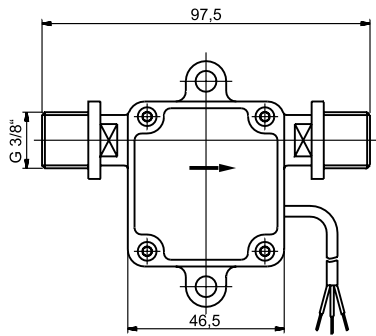
The flowmeter must not be used as a supporting part in a pipe construction.

The liquid must not contain any solids.

External magnetic fields influence the measurement. Keep sufficient distance to magnetic fields (e.g. electromotors).

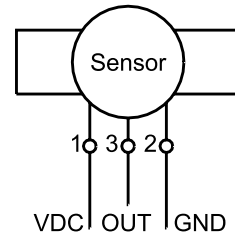


Ranges, Technical Data



Connection diagram

- 1 VDC white
- 2 GND brown
- 3 OUT green



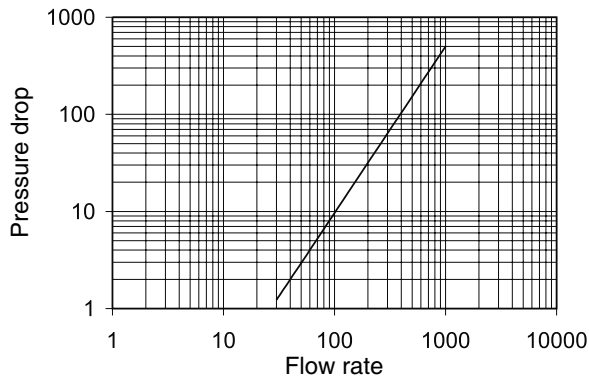
| Operating data | DHGF-10 POM-Version | DHGF-10 ECTFE-Version |
|--|---|-----------------------|
| Flow range (H ₂ O at 22 °C) | | |
| standard: | 50 - 500 l/h | 50 - 1000 l/h |
| optional (with ceramic bearing): | 50 - 1000 l/h | — |
| Sensing principle: | Hall-effect, touchless | |
| Viscosity range: | 1 - 10 cSt | |
| Accuracy: | ± 2 % from scale value (at same operating conditions) | |
| Repeatability: | < ± 0,8 % from scale value (at same operating conditions) | |
| Max. operating pressure: | 5 bar | |
| Burst pressure (at 22 °C): | 8 bar | |
| Operating temperature: | 0° C to +80 °C | |
| Ingress protection: | IP65 | |
| Output signal: | square wave (push-pull output stage) | |
| Max. output current (at 24 V): | 11 mA | |
| Power supply: | 4,5 - 24 VDC | |
| Connection cable (1 m): | Round cable 3 x 0,14 mm ² LIYY | |

| Materials | POM-Version | ECTFE-Version |
|----------------------------|-------------------|--------------------|
| Housing: | POM | ECTFE |
| Impeller: | POM | ECTFE |
| Bearing (spigot bearing) | | |
| standard (axle / bearing): | Corepoint® / POM | ceramic / ceramic |
| optional (axle / bearing): | ceramic / ceramic | — |
| Magnets: | POM-encapsulated | ECTFE-encapsulated |
| O-Rings: | FKM or EPDM * | FKM or EPDM * |
| Weight: | approx. 80 g | approx. 140 g |
| Process connection: | G 3/8" | G 3/8" |

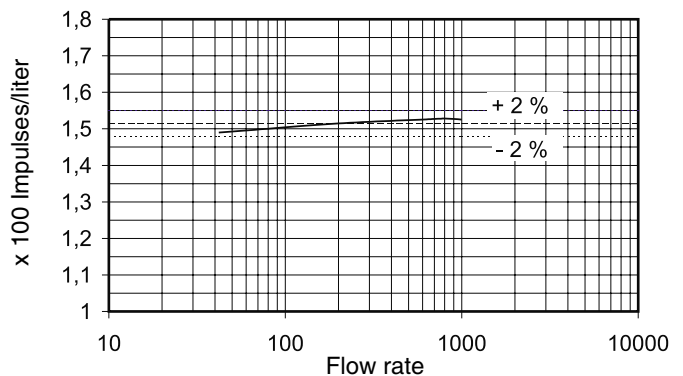
* FKM: green colourcode

EPDM: black colourcode

Pressure drop diagram



Pulse curve



DHGF-10 2 0002 04-05 E M



TR Automatyka Sp. z o. o.
ul. Lechicka 14 ; 02-156 Warszawa

Tel. (+48 022) 886 10 16
Fax. (+48 022) 846 50 37

www.trautomatyka.pl
biuro@trautomatyka.pl