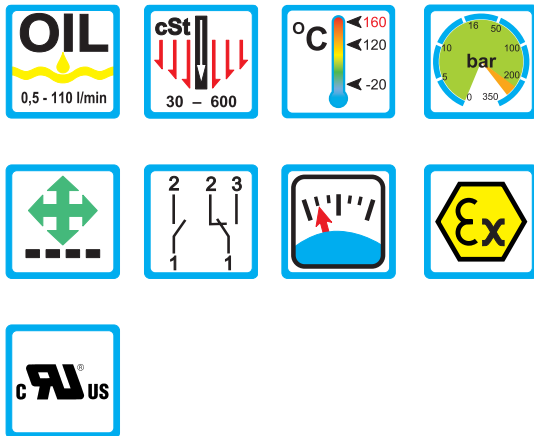


Flow Monitor Flow Indicator



DKM/A



Areas of Application

Method of Operation

- Float measuring principle

Areas of Application

- Machine construction
- Central lubrication
- Circulation lubrication
- Transformers

Features

- Universal orientation
- High reliability
- Viscosity compensated
- High switch accuracy
- Infinitely variable switchpoint adjusted by user
- EX-version to ATEX available
- Threaded connection, special threads on request
- High pressure resistance

Installation information

- The operating instruction for DKM/A must be observed
- Download: www.meister-flow.com

Operating Data

Operating pressure max.	250 bar (MS) / 300 bar (VA)
Pressure drop	0,02 - 0,4 bar
Viscosity range	30 cSt to 600 cSt
Maximum temperature	120 °C (optional 160 °C)
Accuracy	±10 % of full scale

Measuring Ranges

Type	Switch range for oil, density 0,9 kg/dm ³ ⁽¹⁾		
	[l/min]	[gph]	[gpm]
DKM/A-1/2	0,5 - 1,5	8,0 - 24,0	
DKM/A-1/4	1 - 4	16,0 - 63,0	
DKM/A-1/8	2 - 8	32,0 - 127,0	
DKM/A-1/10	3 - 10	48,0 - 160,0	
DKM/A-1/15	5 - 15	80,0 - 240,0	
DKM/A-1/24	8 - 24	125,0 - 380,0	
DKM/A-1/30	10 - 30	160,0 - 480,0	
DKM/A-1/45	15 - 45	240,0 - 710,0	
DKM/A-1/60	20 - 60	320,0 - 950,0	
DKM/A-1/90	30 - 90		8,0 - 24,0
DKM/A-1/110	35 - 110		9,5 - 29,0

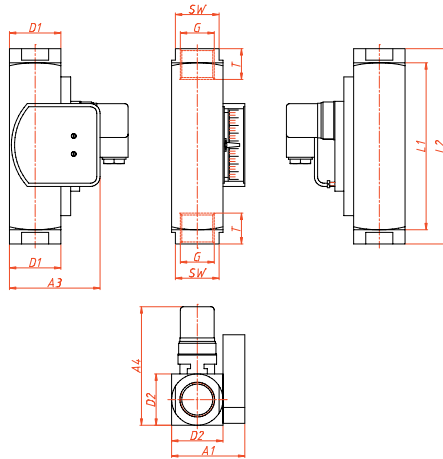
⁽¹⁾ The specified data are switch-off points, other switch ranges on request.

DKM/A 1 0004 02-11 E M

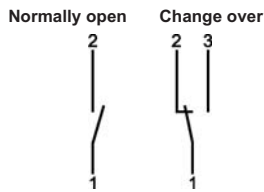


Technical Data

Mechanical drawing



Connection diagram



Electrical Data

Change over 250V • 1,5A • 50VA ⁽²⁾

Normally open 250V • 3A • 100VA

ATEX II 2 G Ex mb II T6 & ATEX II 2 D Ex tD A21 IP67 T80 °C

ATEX II 2 G Ex mb II T5 & ATEX II 2 D Ex tD A21 IP67 T100 °C

Change over 250V • 1A • 30VA

Normally open 250V • 2A • 60VA

Change over M 12x1 (-20 °C - 85 °C) 250V • 1,5A • 50VA ⁽²⁾

Normally open M 12x1 (-20 °C - 85 °C) 250V • 3A • 100VA

Change over SPS 250V • 1A • 60VA

Ingress Protection:

IP65: plug connection DIN 43650 Form A

IP67: 1 m sealed in cable, (with EEx-version 2 m)

or plug connection M 12x1

Output signal

The contact opens / changes when the flow decreases below the set point.

Power supply

Not required (potentialfree reed contacts)

Plug types

Other plug types or cable lengths on request

⁽²⁾ Minimum load 3 VA

Summary of types

Type:	Overall dimensions [mm]												Weight approx. [g]
	SW	L1	L2	D1	G	T	D2	DN	A1	A2	A3	A4	
DKM/A-1/2	34		152		1/4"	10		8					
	34	130	152	40	1/2"	14	40 / 40	15	57	-	70,5	approx.	1515
	34		152		3/4"	15		20				93	1430
DKM/A-1/4	40		130		1"	17		25					1250
DKM/A-1/8	34		152		1/2"	14		15					1515
DKM/A-1/10	34	130	152	40	3/4"	15	40 / 40	20	57	-	70,5	approx.	1430
DKM/A-1/15	40		130		1"	17		25				93	1250
DKM/A-1/24													
DKM/A-1/30	34		152		3/4"	15	40 / 40	20	57	-	70,5	approx.	1430
DKM/A-1/45	40	130	130	40	1"	17		25				93	1250
DKM/A-1/60													
DKM/A-1/90	40	130	130	40	1"	17	40 / 40	25	57	-	70,5	approx.	1250
DKM/A-1/110												93	

Material

Brass version

Wetted parts:

Spring: 1.4571
 Gaskets: FKM
 (optional NBR, EPDM) ⁽³⁾
 Magnets: Hard ferrite
 Housing: Brass nickel-plated

all other wetted parts: Brass

Stainless steel version

Wetted parts:

Spring: 1.4571
 Gaskets: FKM
 (optional NBR, EPDM) ⁽³⁾
 Magnets: Hard ferrite
 Housing: 1.4571

all other wetted parts: 1.4571

⁽³⁾ Other gasket materials on request



TR Automatyka Sp. z o. o.
 ul. Lechicka 14 ; 02-156 Warszawa

Tel. (+48 022) 886 10 16
 Fax. (+48 022) 846 50 37

www.trautomatyka.pl
biuro@trautomatyka.pl