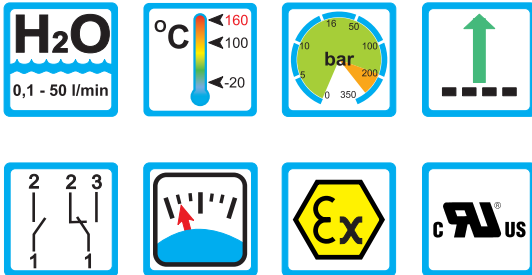


Flow Monitor Flow Indicator



DWM/A



Range of Application

Operation

- Float measuring principle

Application

- Cooling systems and cooling circuits
- Mechanical engineering
- Medicine technology
- Pharma industry
- Chemical industry
- Research and development

Features

- High reliability
- High switch accuracy
- Wide switch range
- Infinitely variable switchpoint, adjustment through user
- EX-version to ATEX available
- High pressure resistance
- Threaded connection, special threads on request

Installation hints

- The operating instructions for DWM/A must be observed!
- Download: www.meister-flow.com

Operating Data

Operating pressure max.	200 bar (Brass) 300 bar (Stainless steel)
Pressure drop	0,02 - 0,2 bar
Maximum temperature	100 °C (optional 160 °C)
Accuracy	±5 % of full scale

Measuring Ranges

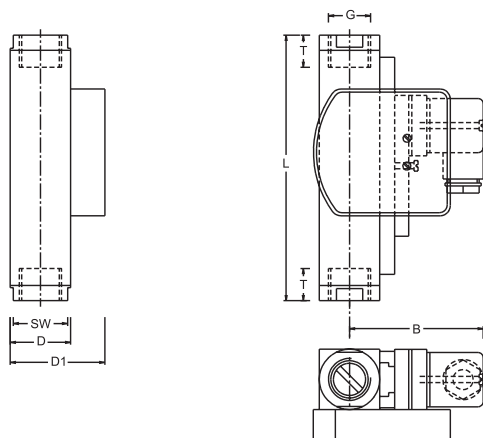
Type	Flow ranges for H ₂ O at 20°C ⁽¹⁾		
	[l/min]	[gph]	[gpm]
DWM/A-1,5	0,1 - 1,5	1,5 - 23,8	
DWM/A-3	0,2 - 3	3,0 - 47,5	
DWM/A-8	0,3 - 8	5,0 - 127,0	
DWM/A-12	1 - 12	16,0 - 190,0	
DWM/A-18	2 - 18	32,0 - 285,0	
DWM/A-35	3 - 35	50,0 - 555,0	
DWM/A-50	4 - 50	65,0 - 790,0	

¹⁾ The specified data are switch-off points other switch ranges on request.

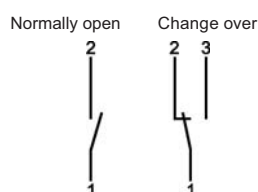


Technical Data

Mechanical drawing



Connection diagram



Summary of types

Type:	Overall dimensions [mm]								Weight approx. [g]
	SW	D	D1	B	G	DN	T	L	
DWM/A-1,5					1/4"	8	14		
DWM/A-3	27	30	47	71	3/8"	10	19	131	850
DWM/A-8					1/2"	15	19		
DWM/A-12									
DWM/A-18	27	30	47	71	1/2"	15	19	146	800
	32	35			3/4"	20	17	174	1010
DWM/A-35	34				3/4"	20	18	152	1500
DWM/A-50	40	76	57	76	1"	25	19	156	1500

Electrical Data

Change over 250V • 1,5A • 50VA ⁽²⁾

Normally open 250V • 3A • 100VA

ATEX II 2 G Ex mb II T6 & ATEX II 2 D Ex tD A21 IP67 T80 °C

ATEX II 2 G Ex mb II T5 & ATEX II 2 D Ex tD A21 IP67 T100 °C

Change over 250V • 1A • 30VA

Normally open 250V • 2A • 60VA

Change over M 12x1 (-20 °C - 85 °C) 250V • 1,5A • 50VA ⁽²⁾

Normally open M 12x1 (-20 °C - 85 °C) 250V • 3A • 100VA

Change over SPS 250V • 1A • 60VA

Ingress Protection:

IP65: plug connection DIN 43650 Form A

IP67: 1 m sealed in cable, (with EEx-version 2 m)

or plug connection M 12x1

Output Signal

The contact opens / changes when the flow decreases below the set point.

Power supply

Not required (potentialfree reed contacts)

Plug types

Other plug types or cable lengths on request

⁽²⁾ Minimum load 3 VA

Material

Brass Version

Wetted parts:

Float: Brass nickel-plated

Gaskets: NBR
(optional FKM, EPDM) ⁽³⁾

Threaded rings: Brass

(only DWM/A-35, -50 (1"))

Centering washer: Brass nickel-plated

(DWM/A-35, DWM/A-50)

Fittings: Brass nickel-plated

(not for DWM/A-35, -50 (1"))

Indicator: Makrolon / Brass nickel-plated

All other wetted parts: Brass nickel-plated

Stainless Steel

Wetted parts:

Float: 1.4571

Gaskets: FKM
(optional NBR, EPDM) ⁽³⁾

Threaded rings: 1.4571

(only DWM/A-35, -50 (1"))

Centering washer: 1.4571

(DWM/A-35, DWM/A-50)

Fittings: 1.4571

(not for DWM/A-35, -50 (1"))

Indicator: Makrolon / Brass nickel-plated

All other wetted parts: 1.4571

⁽³⁾ Other gaskets materials on request



TR Automatyka Sp. z o. o.
ul. Lechicka 14 ; 02-156 Warszawa

Tel. (+48 022) 886 10 16
Fax. (+48 022) 846 50 37

www.trautomatyka.pl
biuro@trautomatyka.pl