

KAA



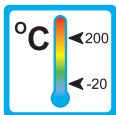
Operation

The KAA flow indicators are rising ball visual indicators. The flow lifts a Teflon® ball out of his base position. The ball rises depending on the flow and finally becomes full visible.

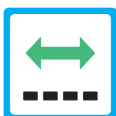


Application

The KAA flow indicators are used to indicate flow of liquid media. The glass visualizes colour changes and changes of media conditions. The flow indicators are for example used in following areas:



- Cooling systems
- Engineering
- Water treatment
- Medical industry
- Research and development



Features

The KAA series proves itself through reliable function and easy handling. Further characteristics of this type are:

- Large indication range
- High chemical resistance (stainless steel-version)
- High temperature durability
- Special threads on request

Installation hints

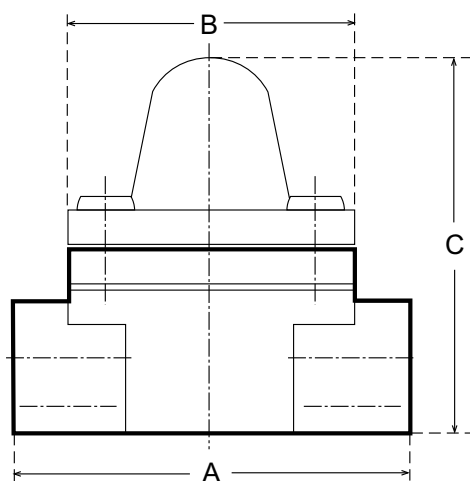
The KAA flow indicators must be mounted horizontal with the sight glass on top. The flow direction must be observed.

The flow monitor must not be used as a supporting part in a pipe construction!

The medium must not contain any solid particles! We recommend the installation of strainers type SFD or SFM!



Technical Data



Summary of types KAA

Type	Flowrate (H ₂ O)			Pressure drop (at v = 2 m/s) [bar]	DN [mm]	G	A [mm]	B [mm]	C [mm]	Weight [kg]
	min. [l/min]	ball visible [l/min]	max. (recommended) [l/min]							
KAA-8	0,1	1,0	6	0,13	8	1/4"	76	63	79	0,72
KAA-10	0,1	1,0	10	0,16	10	3/8"	76	63	79	0,69
KAA-15	0,1	1,0	20	0,19	15	1/2"	76	63	79	0,65
KAA-20	2,4	5,2	40	0,16	20	3/4"	89	63	95	1,30
KAA-25	2,7	5,5	60	0,40	25	1"	89	63	95	1,25
KAA-32	11,0	16,0	100	0,20	32	1 1/4"	117	75	125	2,50
KAA-40	16,0	21,0	150	0,23	40	1 1/2"	117	75	125	2,35

NPT-thread on request

Operating data	KAA	
Operating pressure max.:	PN 16 bar	
Operating temperature max.:	200 °C	
Pressure drop:	see summary of types	
Material	Bronze-version	Stainless steel-version
Body:	Bronze (LG2)	stainless steel 1.4408
Clamp ring:	Bronze	stainless steel
Ball:	PTFE	
Sight glass:	Borosilikat	
O-ring:	Viton®	
Gaskets:	Klingersil® (C-4400)	
Screws:	stainless steel	

KAA.2 0002 05-06 E M



TR Automatyka Sp. z o. o.
ul. Lechicka 14 ; 02-156 Warszawa

Tel. (+48 022) 886 10 16
Fax. (+48 022) 846 50 37

www.trautomatyka.pl
biuro@trautomatyka.pl