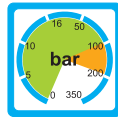
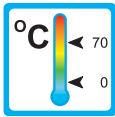


SKT-2



Range of Application

Measuring principle

- Calorimetric

Application

- Cooling systems and cooling circuits
- Machine construction
- Dry run protection for pumps
- Chemical industry
- Research and development

Features

- Compact design
- High operating pressure (up to 200 bar)
- No mechanical moving parts in contact with fluid flow
- Low pressure drop
- One sensor for different nominal sizes

Installation information

- The operating instructions for SKT-2 must be observed
- Download: www.meister-flow.com

Operating Data

Maximum operating pressure	
standard	100 bar
optional	200 bar
Temperature range	0...70 °C

Switching Range

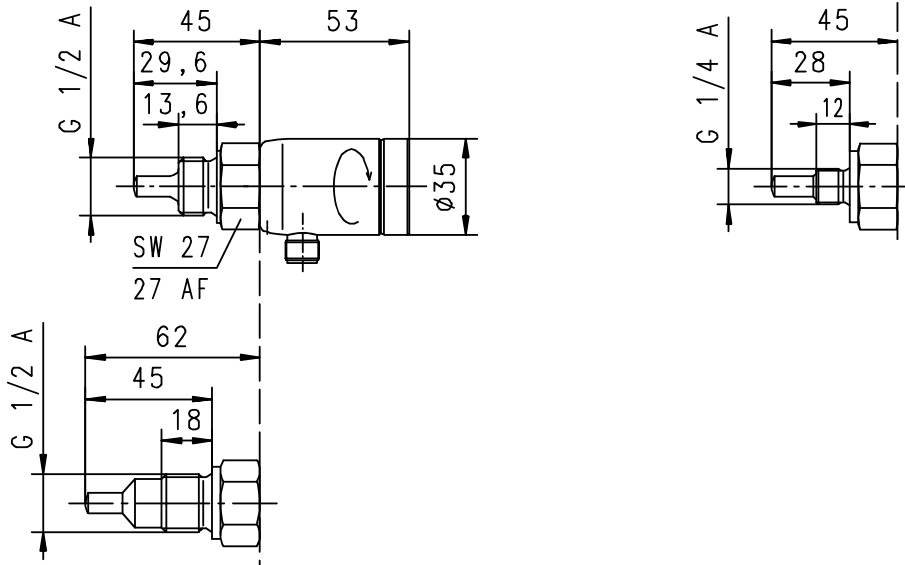
Type

SKT-2	1...150 cm/s
-------	--------------

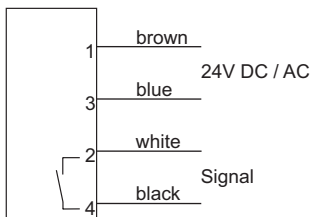


Technical data and Dimensions

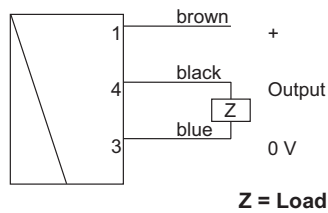
Technical drawings



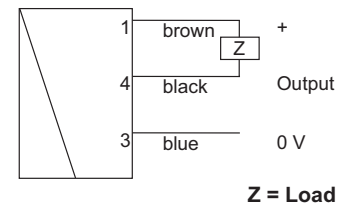
Electrical connection



Relay contact (Normally open)



Push/Pull (PNP)



Push/Pull (NPN)

Technical data

Switching range for water:	
standard	1...150 cm/s
Maximum operating pressure:	
standard	max. 100 bar
optional	max. 200 bar
Operating temperature:	0 °C...+70 °C
Temperature gradient:	4 Kelvin/s
Accuracy:	Depending on the installation situation ca. ± 10 % of switching value
Weight:	0,3 kg
Materials:	
Sensor	Stainless steel 1.4571
Housing	Stainless steel 1.4305

Electrical data

Display:	LED (red /green) red < limit value / green > limit value
Setting potentiometer :	single-threaded
Supply voltage:	24 V DC / AC ± 10 %
Current consumption:	max. 70 mA
Switching output:	
Version 1	Relay contact (Normally open)
Version 2	Relay contact (Normally closed)
Load	max. 2 A / 30 V DC/AC galvanically isolated
Version 3	Transistor output (Push/Pull)
Load	max. 100 mA / 24V
Connection:	for round plug connector M12X1, 4-pole
Short circuit proof :	yes
Reverse polarity proof:	yes
Ingress protection:	IP 65

SKT-2.2.0003 11-10 E.M



TR Automatyka Sp. z o. o.
ul. Lechicka 14 ; 02-156 Warszawa

Tel. (+48 022) 886 10 16
Fax. (+48 022) 846 50 37

www.trautomatyka.pl
biuro@trautomatyka.pl